

# 星迈创新科技（苏州）有限公司

项目名称

P0011

版本号

V1.2

设计时间

20260110

物料名称

M0 快速使用指南

设计师

尚为杰

审核

卢文杰

批准

料号

XM041902-0013

材质工艺要求:

材质要求: 铜版纸 300g **双面覆防刮膜**

颜色及专色: C:100 C:100 M:70 Y:0 K:0

尺寸要求: 按照出血线裁切, 裁切后尺寸为 511\*446 mm

SKZ  
SKRQ

变更履历:

注: 此页面非印刷内容

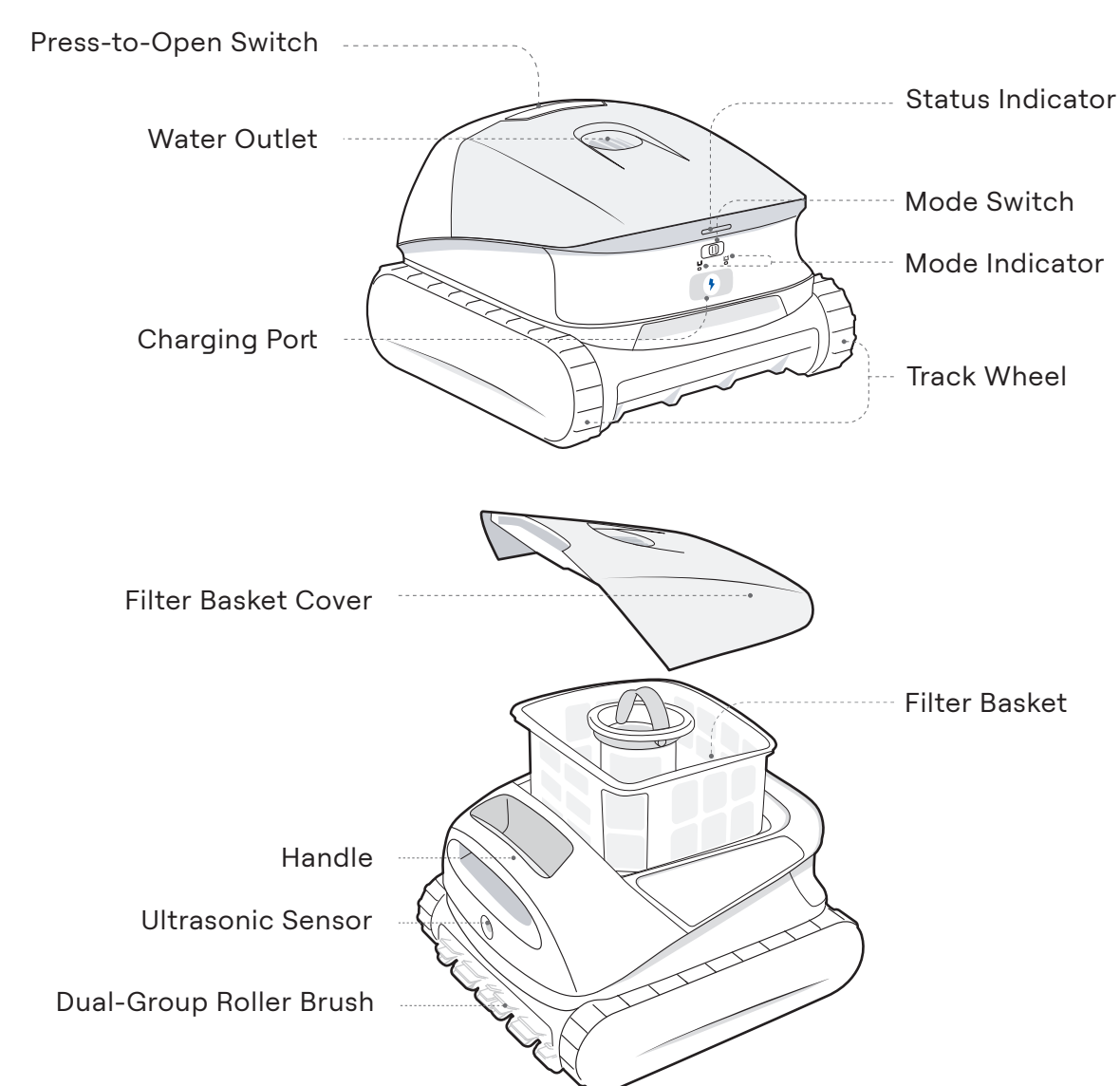
# Beatbot Quick Start Guide

## Quick Start Guide



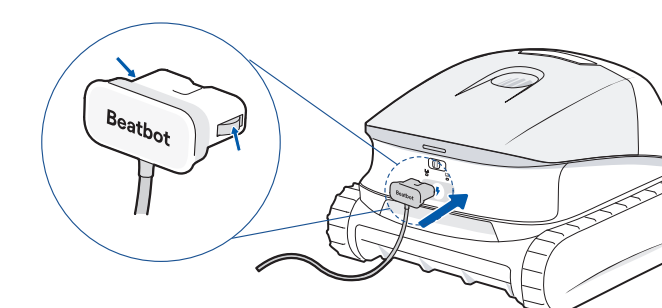
Scan to Check E-Manual

### 1 Structure Diagram

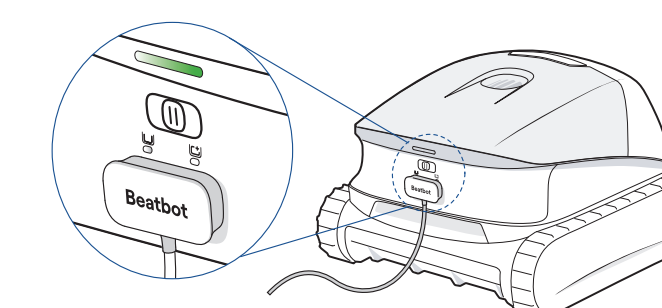


### 2 Start Charging

1. Ensure the charging contacts on the both sides of charger are dry and clean. Align and connect the charger to the robot's charging port.



2. Plug the charger into a power outlet. A breathing light indicates charging is in progress. The robot is fully charged when the status indicator turns solid green.



**Tips:**  
1. The robot is partially charged for safety during shipping. A yellow status indicator is normal upon unboxing. Please fully charge the robot before first use for optimal performance.  
2. Please charge the robot indoors in a dry, cool place with stable Wi-Fi coverage.

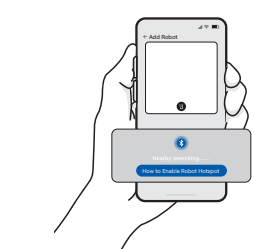
### 3 APP

You can either scan the QR code below or search for "Beatbot" in the App Store or Google Play to download the App.



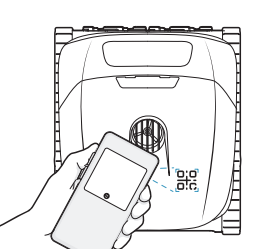
Once powered on, the robot will automatically enter network setup mode. Open the Beatbot App. Tap "Add Robot" on the home page, then choose one of the following methods to add your robot and complete the setup:

Add via Bluetooth



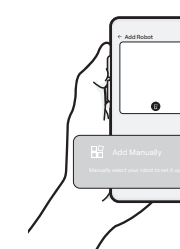
Ensure Bluetooth is enabled on your mobile phone. It will automatically search for your robot model.

Scan to Add



Aim your phone's camera at the QR code located on the robot.

Add Manually

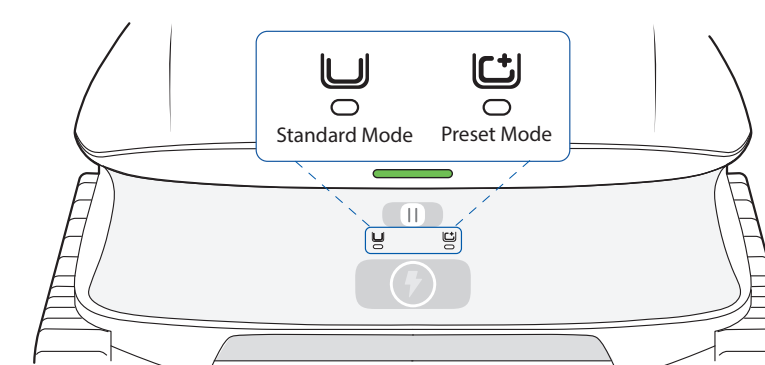


Tap "Add Manually", select your robot model from the list.

### 4 Power On & Select Mode

**When the robot is off:**  
Push the mode switch to / and release immediately (within 1 second) to power the robot on. The cleaning mode is selected based on the direction you pushed. And the corresponding mode indicator turns solid white.

**When the robot is on:**  
Push the switch to the desired position and release it immediately (within 1 second) to change the cleaning mode.

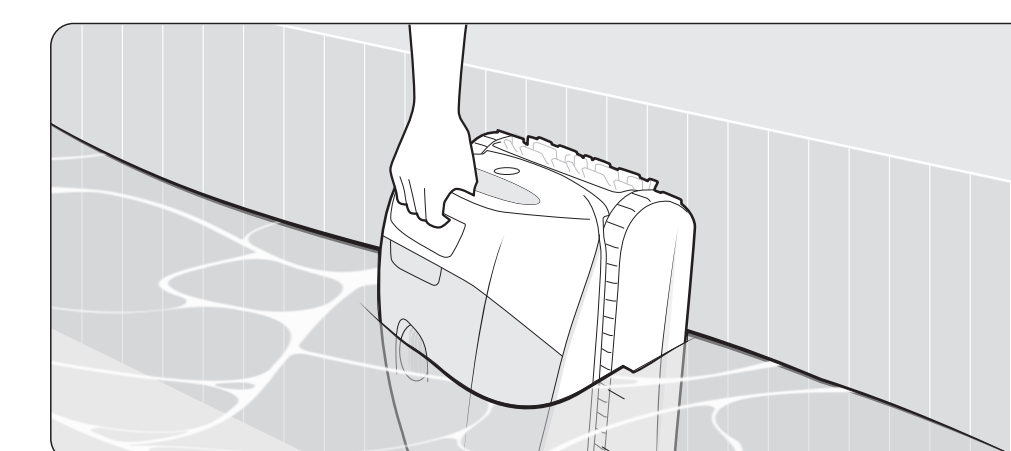


Cleaning Mode	Coverage
Standard Mode	Floor, Walls & Waterline
Preset Mode (Floor Mode defaulted)	Floor

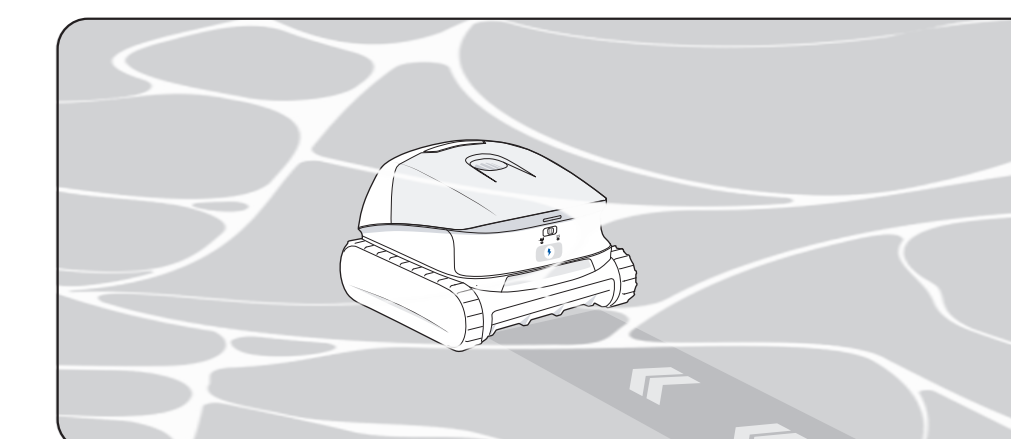
**Tip:**  
You can select other cleaning modes via the App. Your selection will automatically sync to the robot, allowing you to start it directly with the switch next time.

### 5 Start Cleaning

1. Gently place the robot into the water along the pool wall.

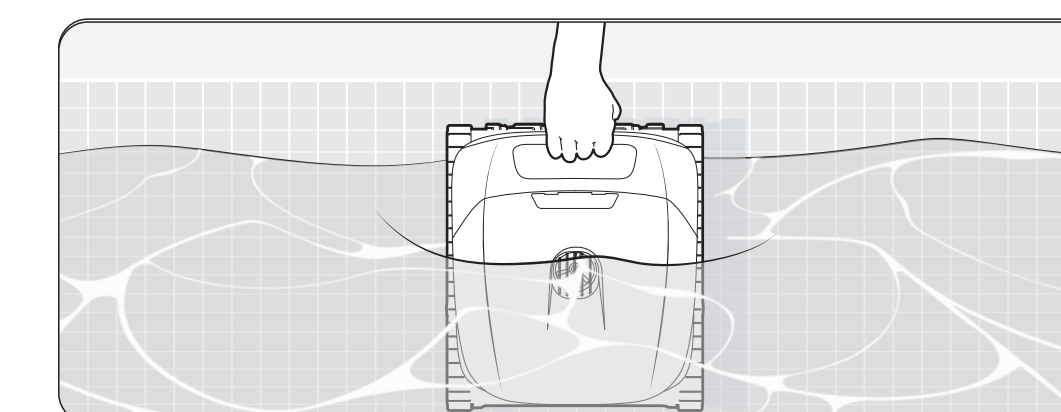


2. The robot begins to submerge and will settle on the pool floor after entering the water. Once settled, it will automatically begin cleaning.



### 6 Retrieve

1. After completing the cleaning task, the robot will automatically park against the pool wall for 10 minutes, and you can manually retrieve it.



2. In the unlikely event that the robot does not park against the pool wall automatically, or when it submerges to the pool bottom after 10 minutes, you can manually retrieve it using the supplied hook.

