

  
**SPAWER**

## BY-PASS KIT SPAWER 50MM

Connection of the heat pump to your spa

- Essential for installing a heat pump
- Optimized heating performance
- Simplified maintenance and winterizing
- Compatible with the entire Spawer range and 90% of the spas available on the market\*

OPTION 1



OPTION 2



**WARRANTY**

**2**  
years

ICESPA



O\*SPA



Rediscover the **Poollex Spawer range** on our website.

\*If needed, a specific study can be carried out by our technical teams.



## BY-PASS KIT SPAWER

This Poollex By-Pass Kit allows you to connect your Spawer heat pump to your spa's filtration system, regardless of the filtration system type, with a diameter of 48/50 mm.

### OPERATING PRINCIPLE :

To install your heat pump, it is essential to create a "by-pass" in your system. This consists of a diversion in the spa's filtration/circulation circuit. The By-Pass Kit allows water to flow through your heat pump and enables you to adjust the flow rate passing through it.

### ADVANTAGES:

- Optimizes the operation of the heat pump
- Allows the heat pump to be isolated while maintaining filtration
- Facilitates maintenance operations

### Note:

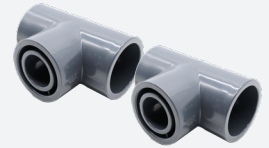
- The 1-meter-long Ø32 mm flexible hoses are included with the by-pass kit.
- In most cases, it is recommended to install the heat pump at the outlet of the filtration pump; otherwise, the flow sensor that ensures water flow safety will not activate, and the heat pump will not start.

### INCLUDED IN THE KIT

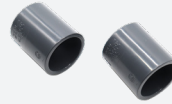
By-pass adaptable to hydraulic circuit with 48/50 mm diameter (flexible hoses)



1 valve with two Ø50 mm union fittings



2 reduced T-fittings Ø50 mm / 32 mm



2 reducing sleeves for Ø48 mm / Ø50 mm hose



4 flexible PVC hoses Ø32 mm



2 valves with two Ø32 mm union fittings



Flexible PVC glue (blue) + Cleaner



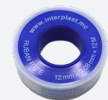
2 glue-on sleeves Ø32 mm



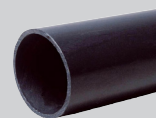
Threaded fittings Ø32 mm / 1''



2 threaded union fittings Ø32 mm



1 roll of Teflon tape



### NOT INCLUDED

Rigid or flexible glue-on pipe Ø50 mm